

North Alaska Peninsula Commercial Salmon Management Overview



A Report to the Alaska Board
of Fisheries; February 2023
Division of Commercial Fisheries

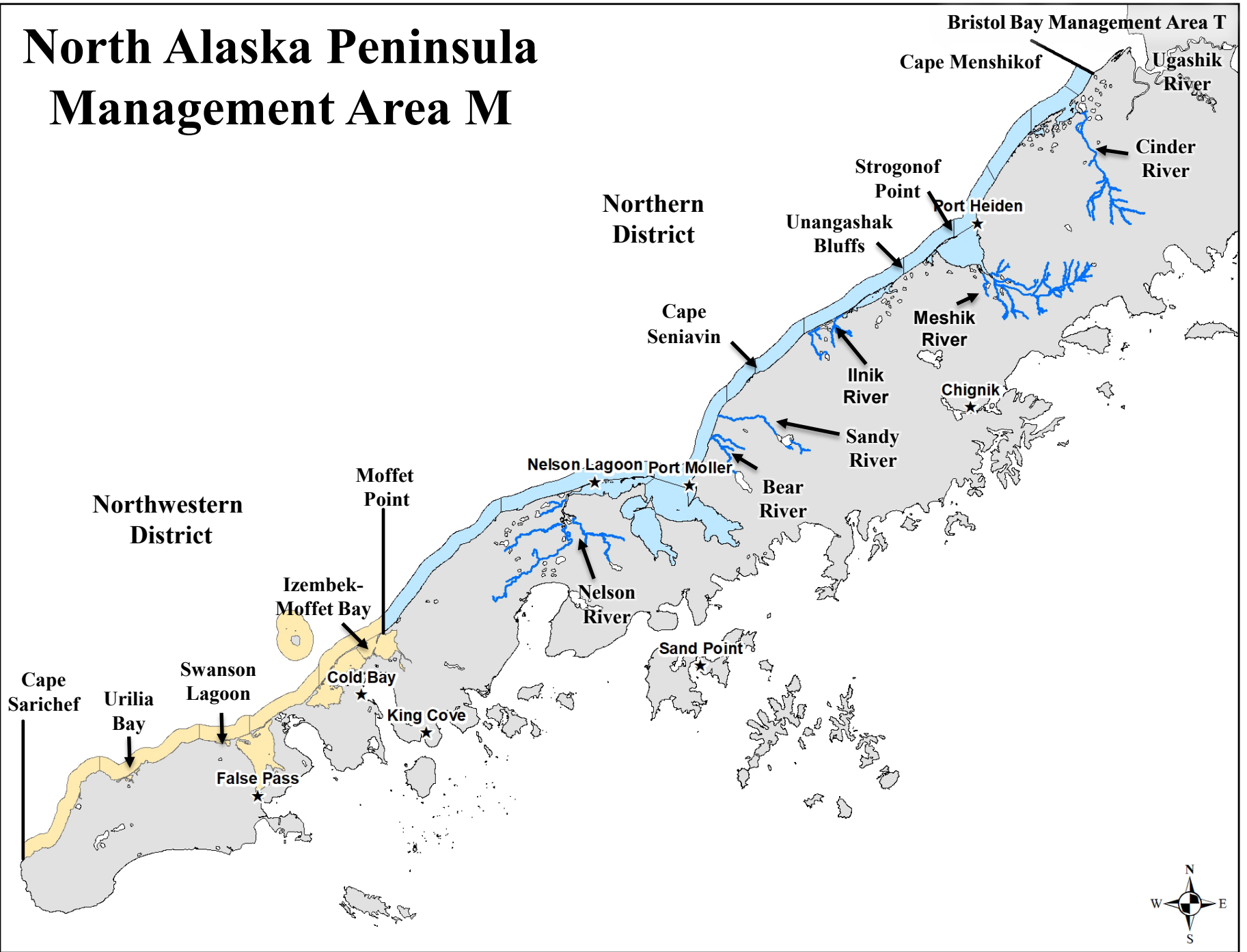
Charles W. Russell
Oral Report: RC 3; Tab 6

Presentation Outline

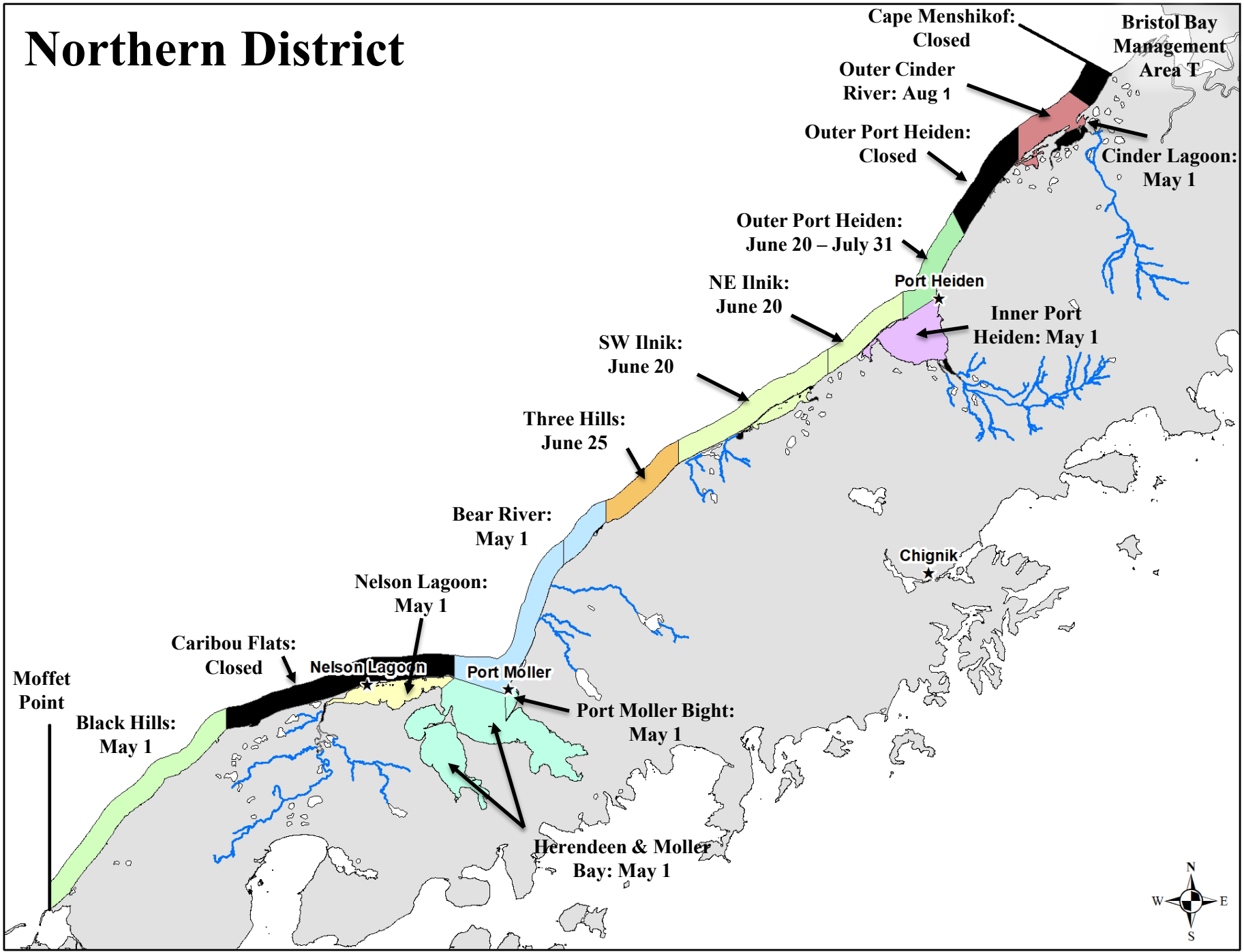
- **North Peninsula Overview**
- **North Peninsula Fishery Assessment Tools and Salmon Management**
- **Harvest and Escapement**
- **Overview of Proposals**



North Alaska Peninsula Management Area M



Northern District



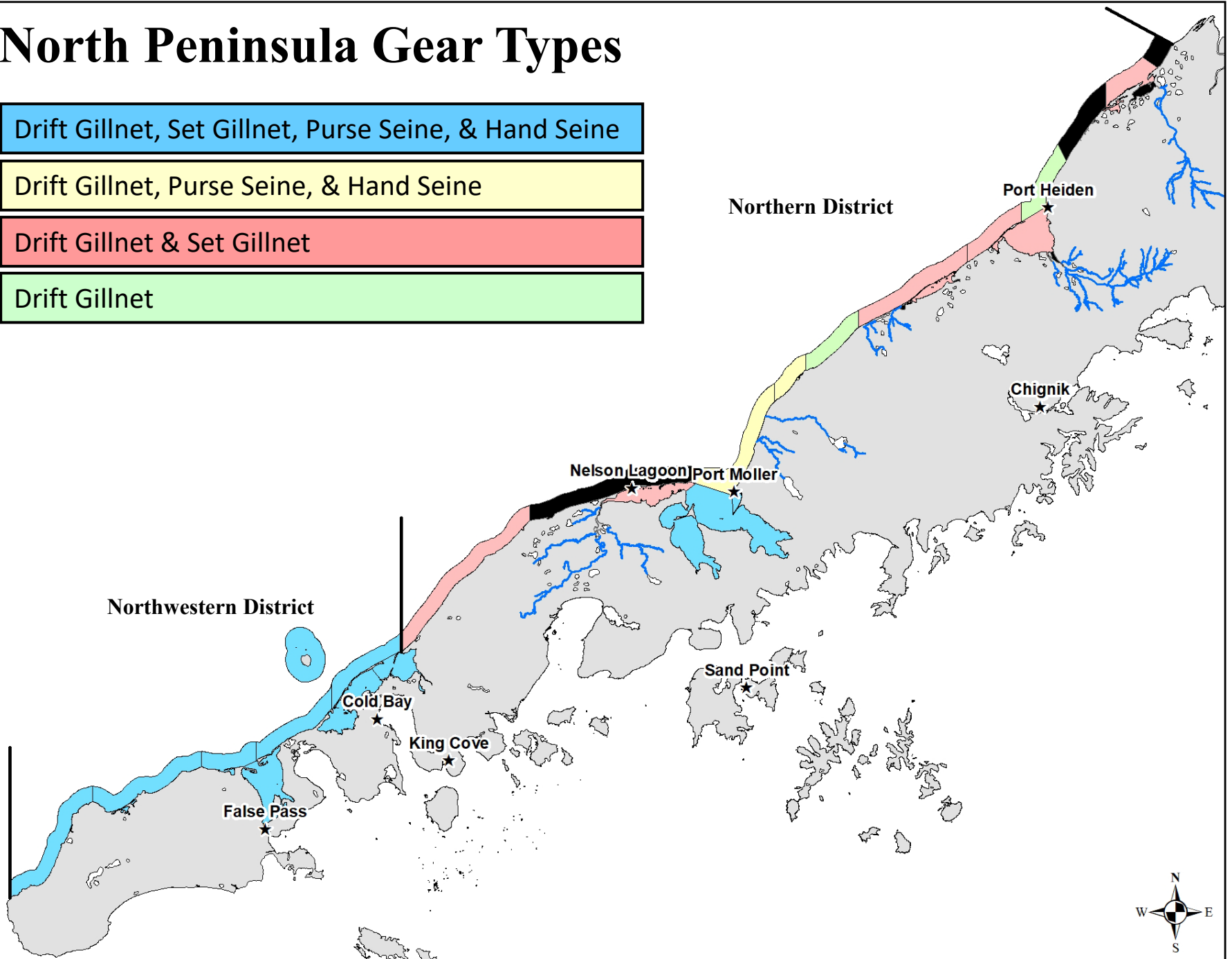
North Peninsula Gear Types

Drift Gillnet, Set Gillnet, Purse Seine, & Hand Seine

Drift Gillnet, Purse Seine, & Hand Seine

Drift Gillnet & Set Gillnet

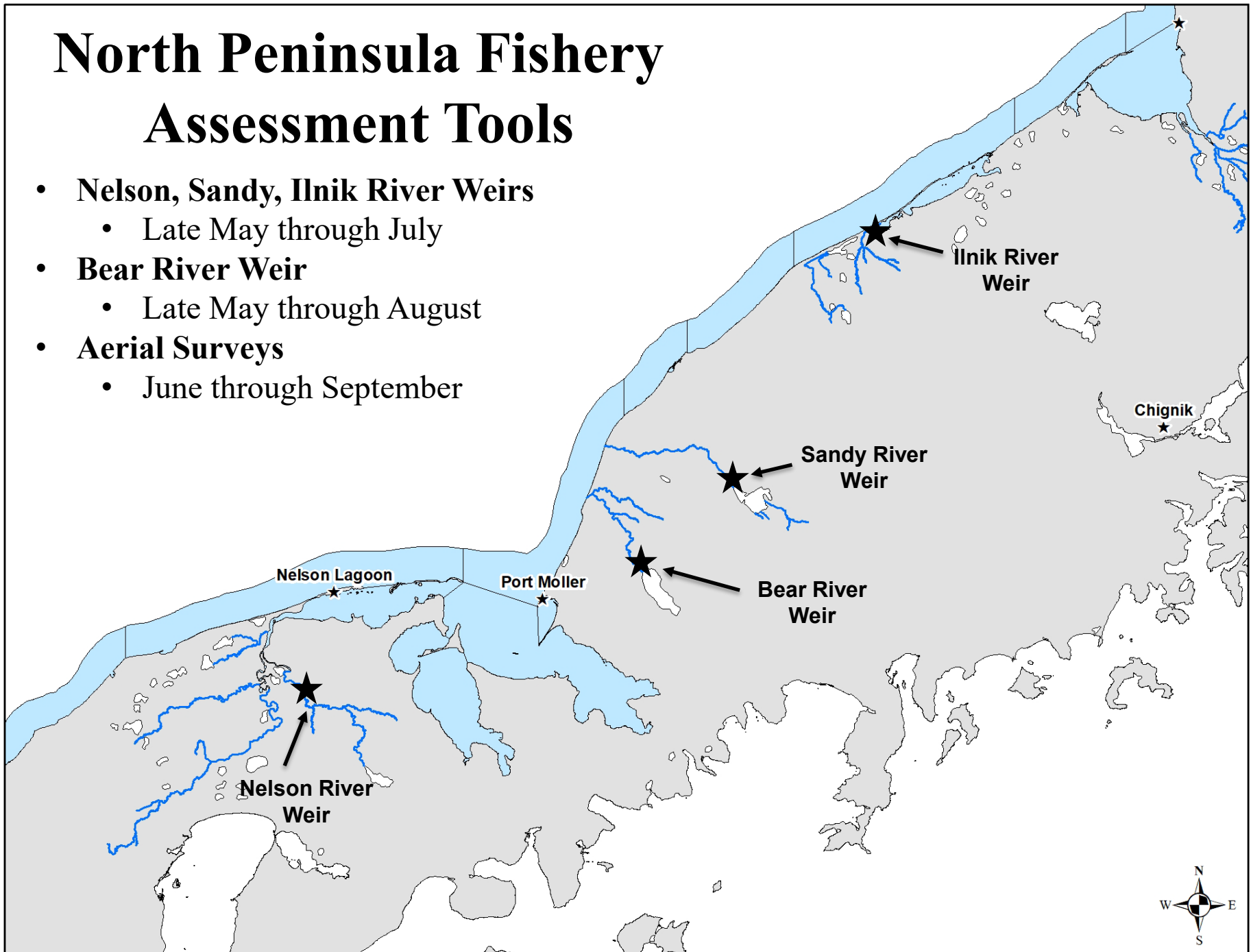
Drift Gillnet



North Peninsula Fishery

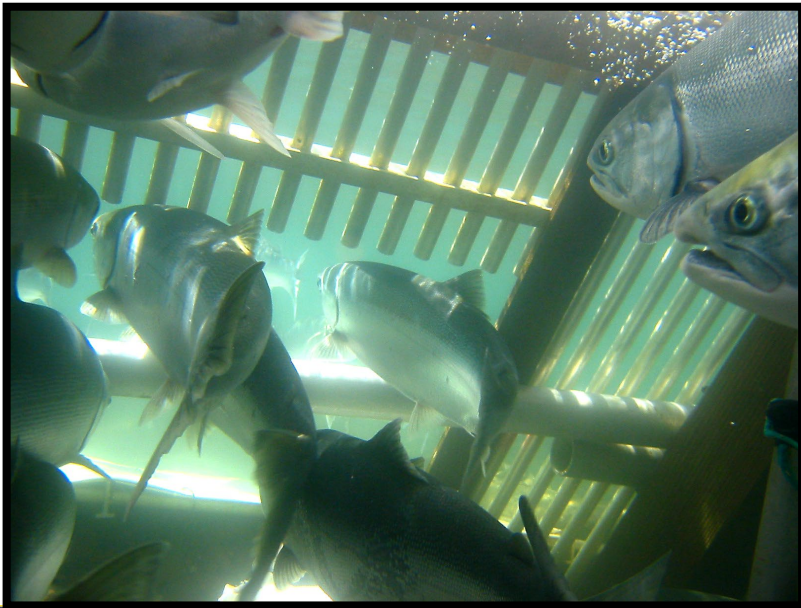
Assessment Tools

- **Nelson, Sandy, Ilnik River Weirs**
 - Late May through July
- **Bear River Weir**
 - Late May through August
- **Aerial Surveys**
 - June through September



North Peninsula Salmon Management

- Escapement Monitoring
 - Weirs
 - Aerial Surveys
- Daily Harvest Reporting
- Test Fisheries
- Age, Sex, Length Data

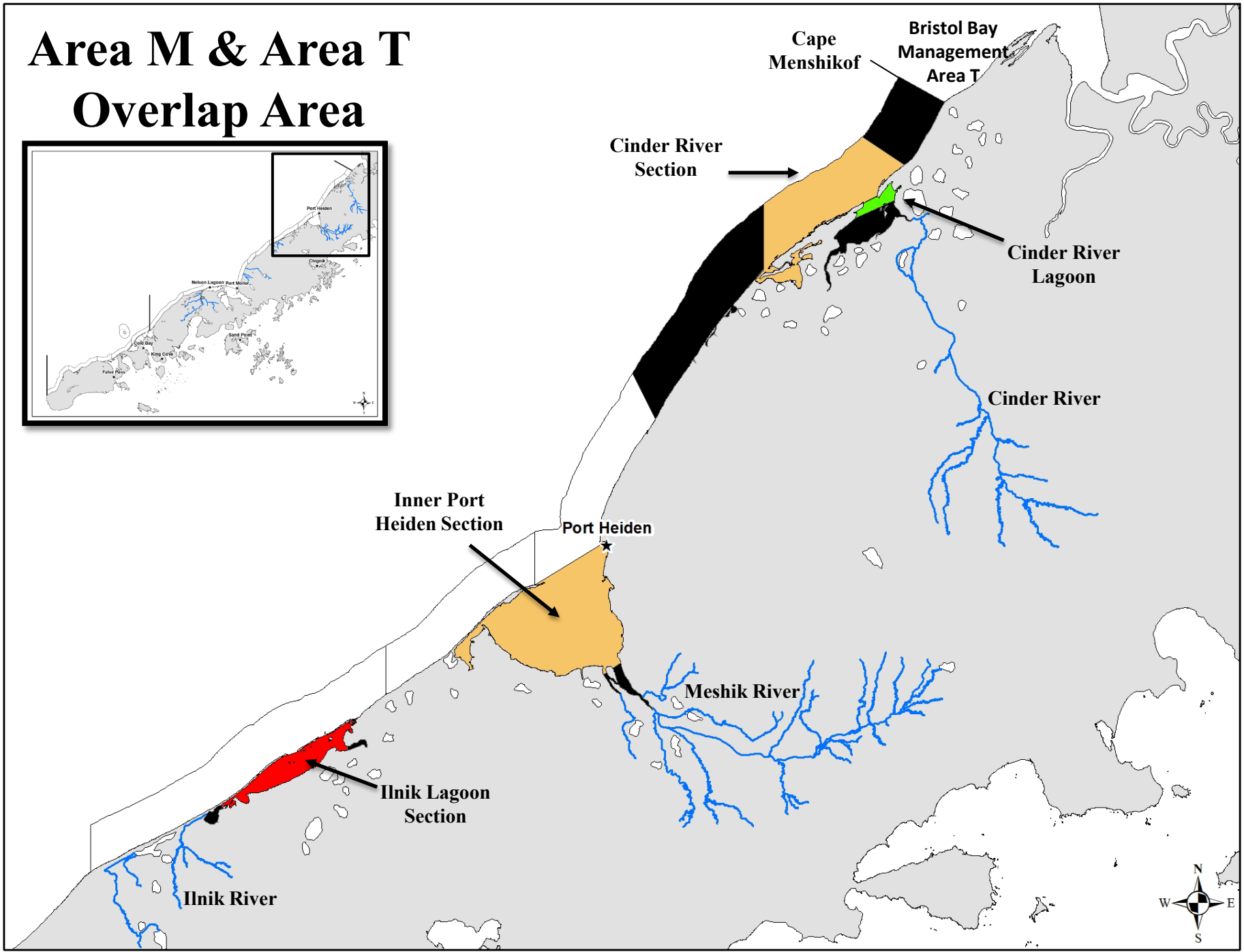
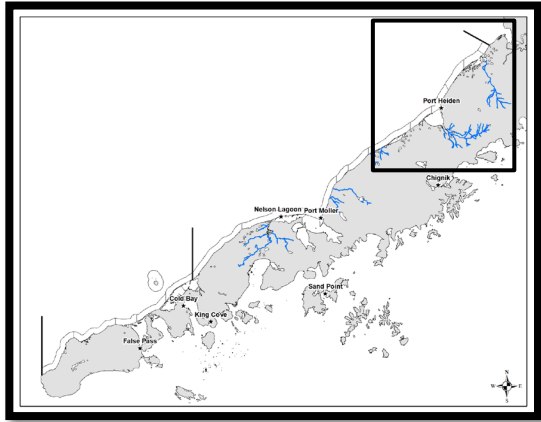


Sockeye Salmon Stocks Managed in Five Areas of the Northern District

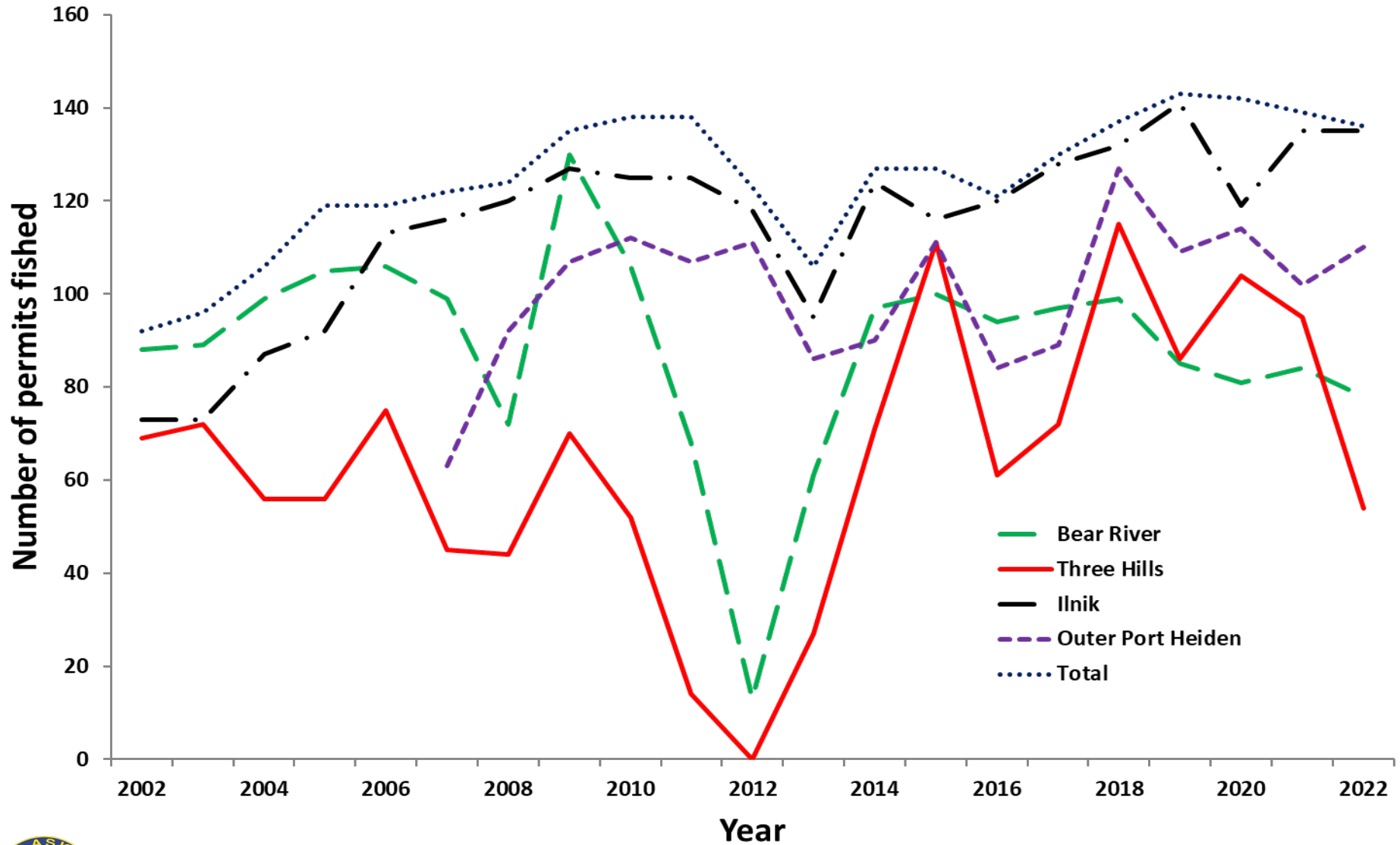
Area	Through July 20	Post July 20
Bear River Section	Bear and Sandy Rivers	Bear and Sandy Rivers
Three Hills Section	Bear, Sandy, and Ilnik Rivers	Bear and Sandy Rivers
Ilnik Section SW of Unangashak Bluffs	Ilnik and Ugashik Rivers	Bear River (through August 15 only)
Ilnik Section NE of Unangashak Bluffs	Ilnik, Meshik, and Ugashik Rivers	Bear River (through August 15 only)
Outer Port Heiden Section (June 20 – July 31)	Meshik and Ugashik Rivers	Meshik River



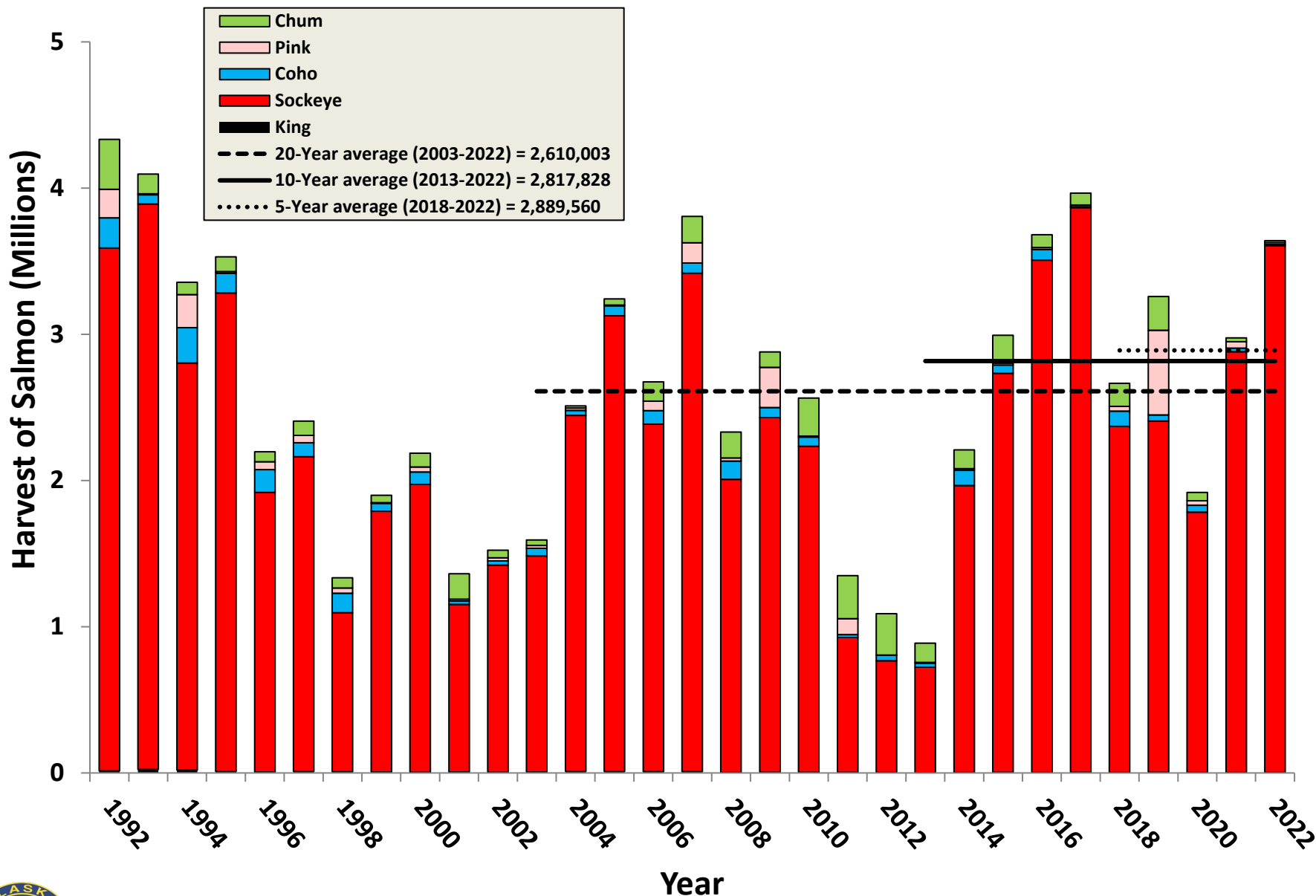
Area M & Area T Overlap Area



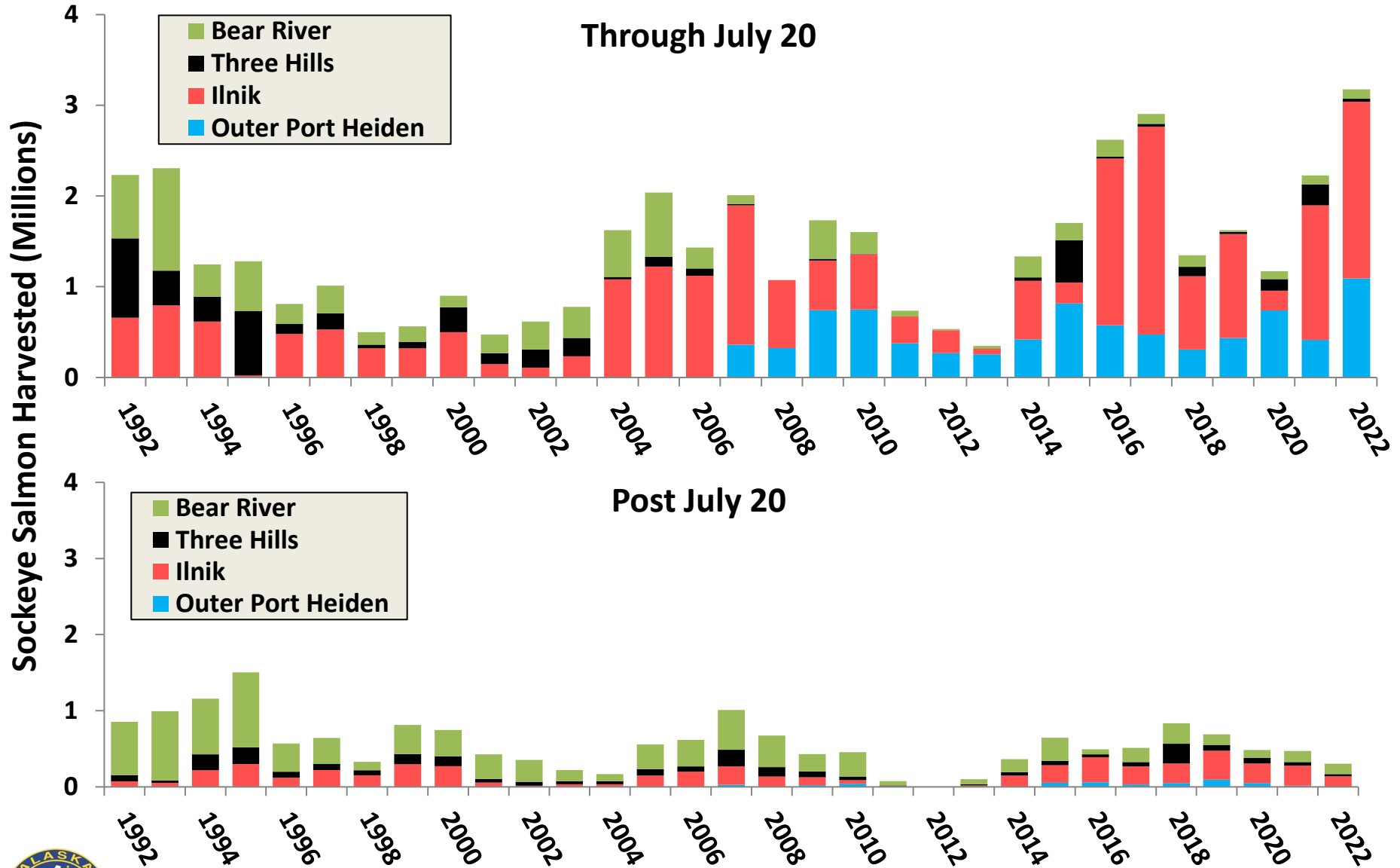
Number of permits fished in the Bear River, Three Hills, Ilnik and Outer Port Heiden sections, 2002-2022



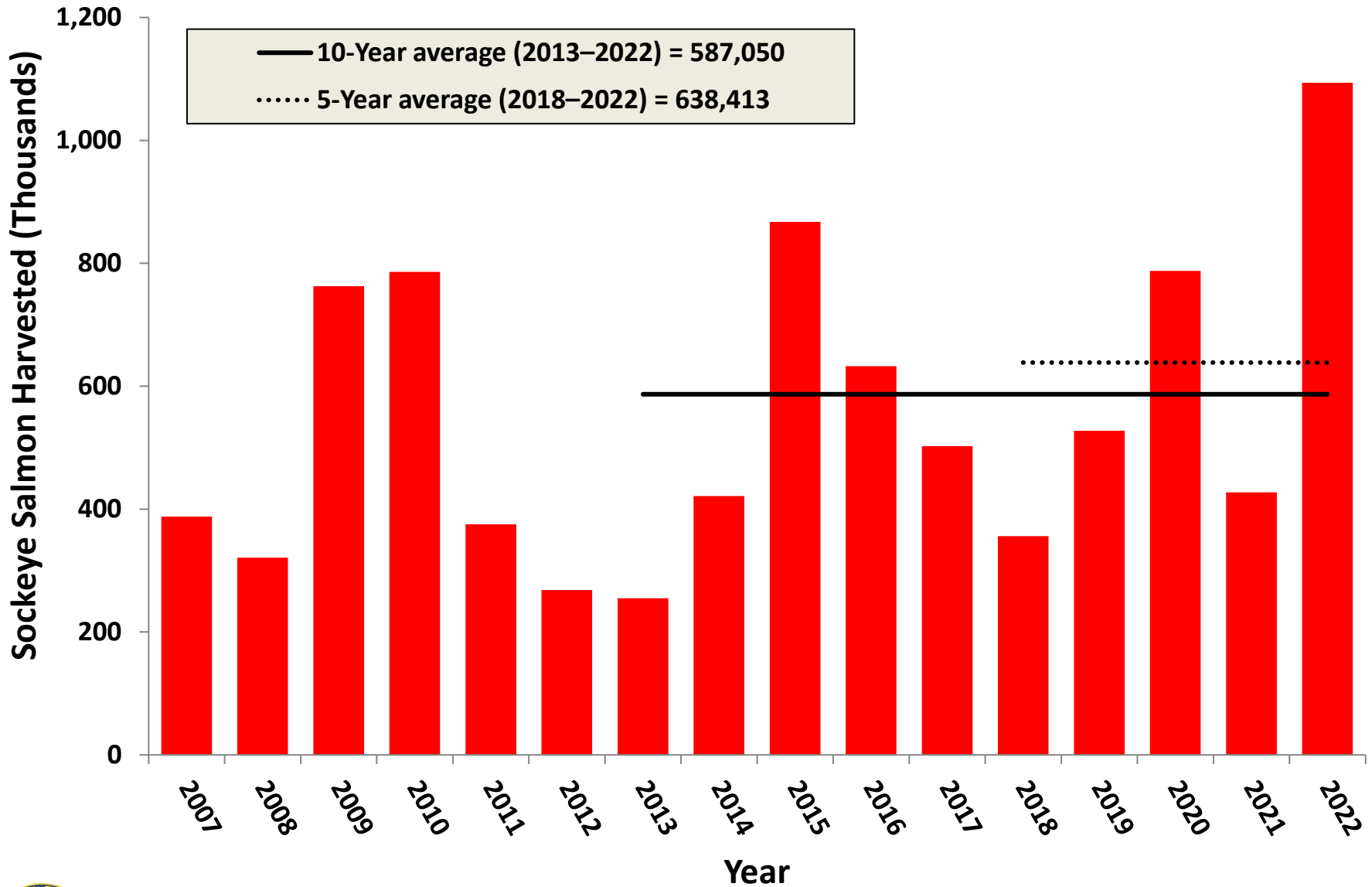
North Peninsula Salmon Harvest, 1992–2022



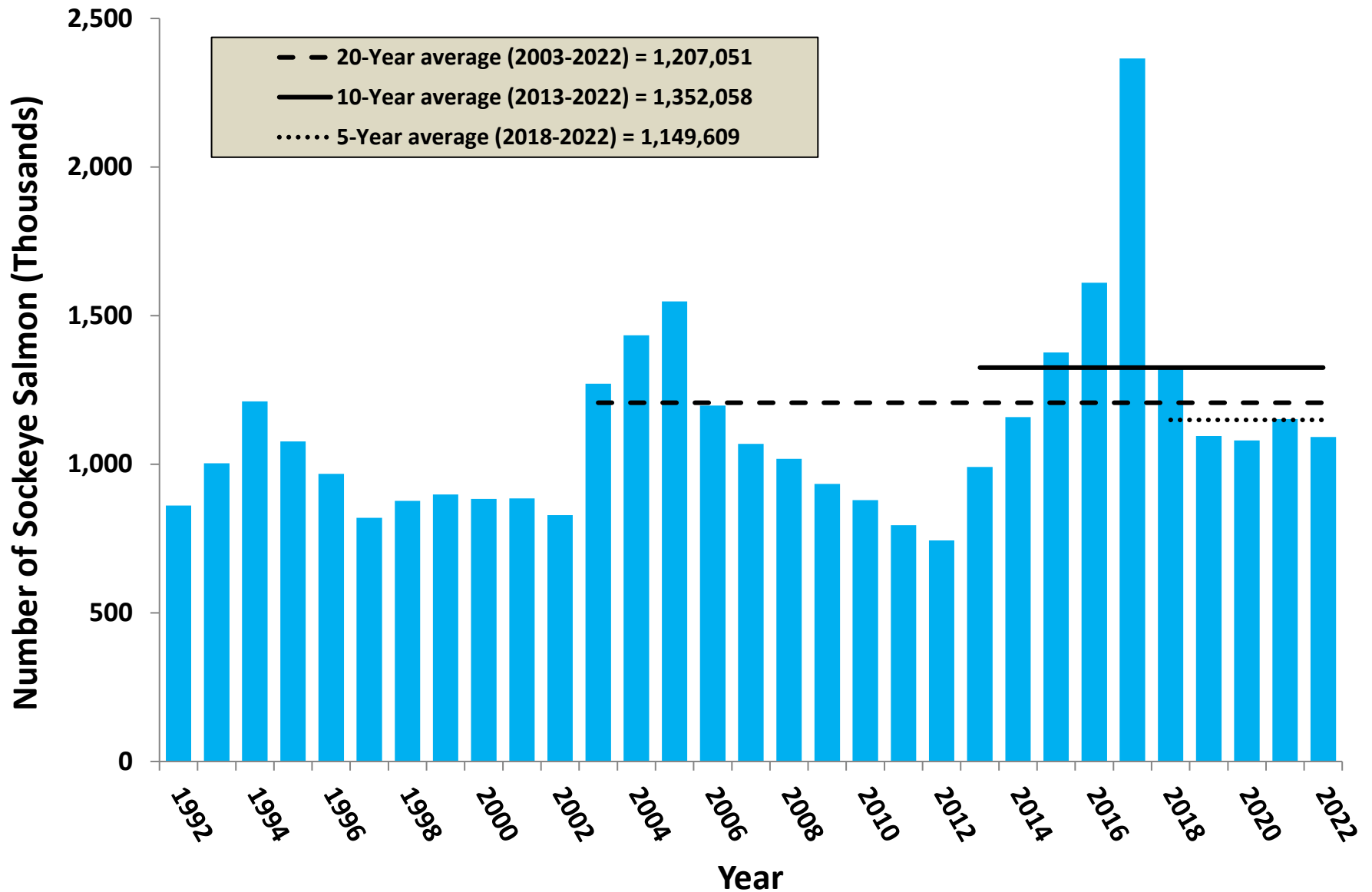
Bear River, Three Hills, Ilnik, and Outer Port Heiden Sections Harvest, Through and Post July 20, 1992-2022



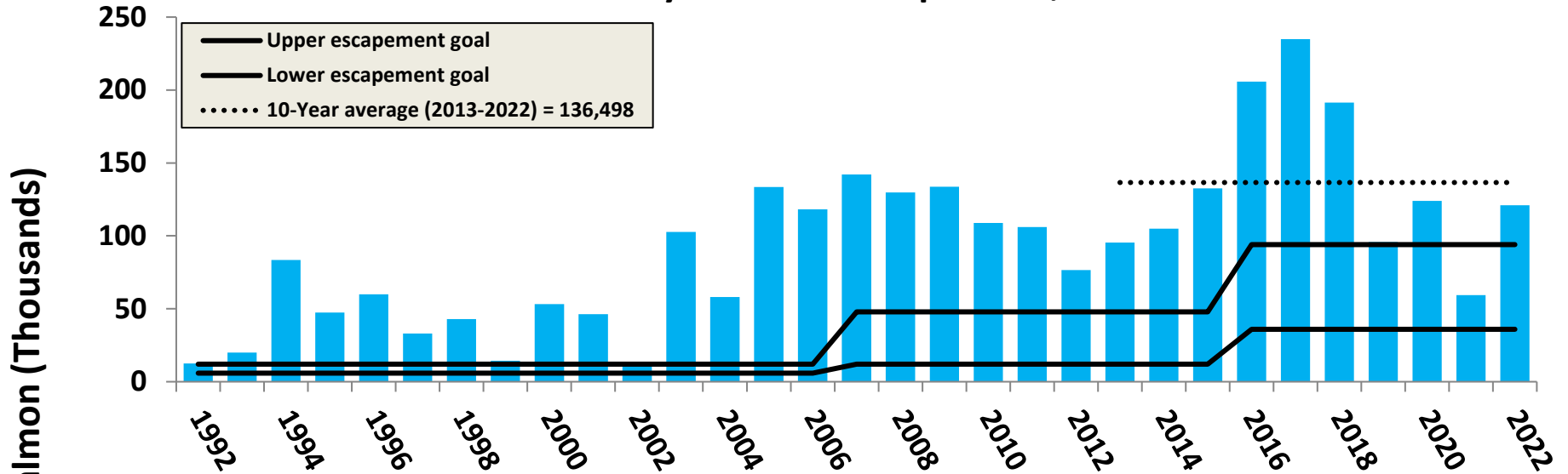
Outer Port Heiden Commercial Salmon Harvest, 2007–2022



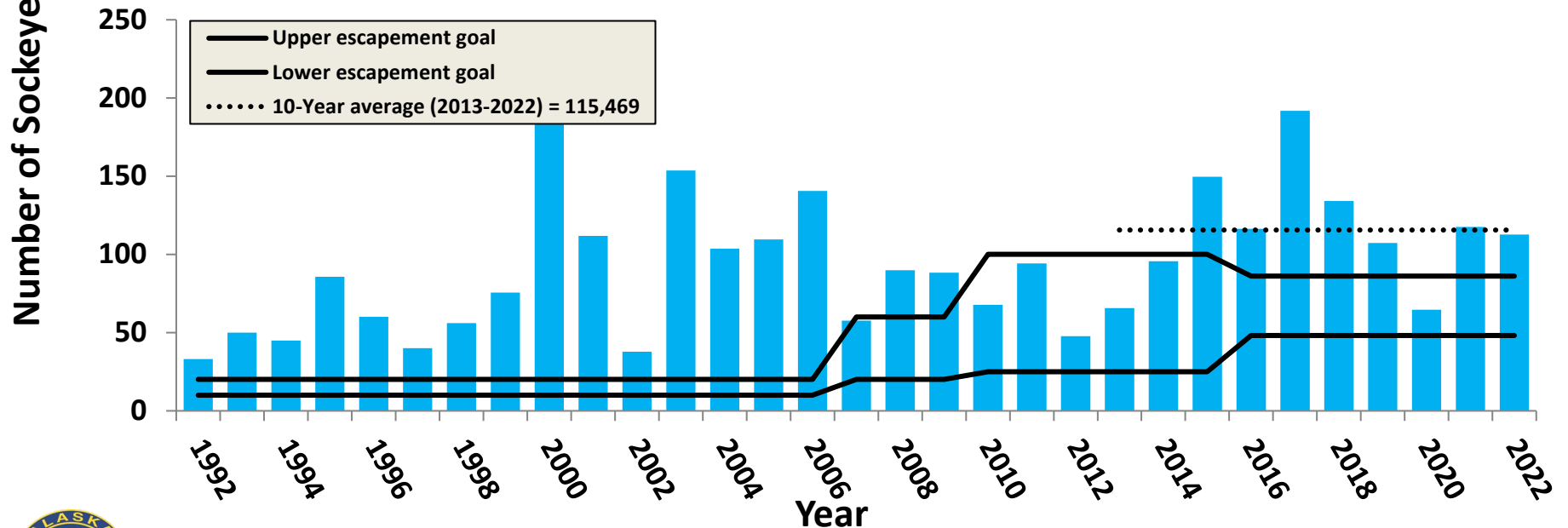
North Peninsula Sockeye Salmon Escapement, 1992–2022



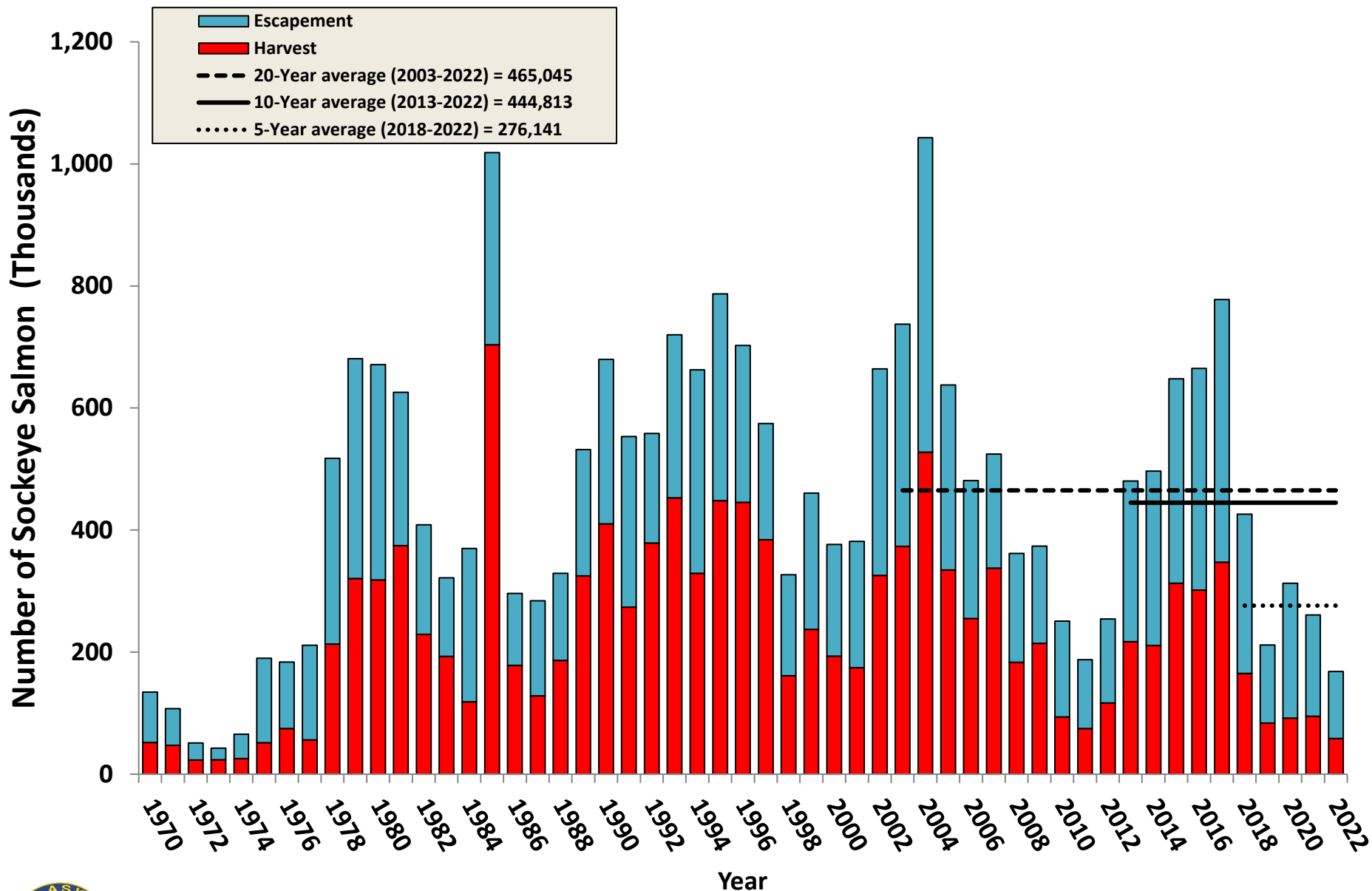
Cinder River Sockeye Salmon Escapement, 1992–2022



Meshik River Sockeye Salmon Escapement, 1992–2022



Nelson River Sockeye Salmon Total Run, 1970–2022



North Peninsula Proposals

Proposal 120

Institutes mandatory fishery closures in the Northern District fisheries.

Proposal 121

Allow the Three Hills section to open as early as June 20.

Proposal 122

Allow fishing in the outer portion of the Cinder River Section for 36 hours per week from June 20-July 31 for set and drift gillnet gear.

Proposal 123

Allow fishing within 0.5 miles of the beach in the outer portion of the Cinder River Section for set gillnet gear starting July 1.

Proposal 124

Allow fishing in the outer portion of the Cinder River Section for 36 hours per week from June 20-July 31 for set and drift gillnet gear.

Proposal 125

Change the angle of the eastern boundary line in the Outer Port Heiden Section.

Proposal 126

Reduce the size of the Outer Port Heiden Section by changing the eastern boundary line.

Proposal 127

Opens the Caribou Flats Section to commercial fishing when the lower bound of the Nelson River escapement goal has been met.

Proposal 128

Would reduce gillnet depth from 70 mesh to 45 mesh on the North Peninsula.

Proposal 129

Allow monofilament web in the Northern District commercial salmon set gillnet fishery.



Questions or Comments?



Acknowledgments

- ADF&G Commercial Fisheries Staff
- Will Middleton
- Alisa Aist
- Jeff Wadle

